

GM = 1 NO.
 DGM = 4 NOS.
 STAFF = 407 NOS.

TOTAL BANK STAFF = 412 NOS.

MEETING ROOMS = 5 NOS.

G.M.-
 GM : 1 NO.
 GM CABIN SIZE : 19'-2" X 12'-2"
 GM TABLE SIZE : 7'-0" X 3'-6" X 2'-6"
 GM SIDE CREDENZA : 4'-0" X 1'-6" X 2'-6"
 GM BACK CREDENZA : 10'-9" X 1'-6" X 2'-6"
 GM SOFA 3 SEATER : 6'-6" X 2'-8" X 3'-0"
 GM SOFA 1 SEATER : 2'-8" X 2'-8" X 3'-0"

D.G.M.-
 GM : 4 NOS.
 DGM CABIN SIZE : 10'-7" X 12'-2"
 DGM TABLE SIZE : 6'-0" X 3'-0" X 2'-6"
 DGM SIDE CREDENZA : 4'-0" X 1'-6" X 2'-6"
 DGM BACK CREDENZA : 10'-7" X 1'-6" X 2'-6"
 DGM SOFA 3 SEATER : 5'-9" X 2'-6" X 3'-0"

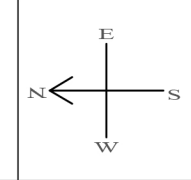
MEETING ROOM-
 MEETING ROOM : 5 NOS.
 MEETING ROOM SIZE : 10'-6" X 12'-2"
 MEETING TABLE SIZE : 5'-0" X 3'-0" X 2'-6"

STAFF-
 STAFF : 407 NOS.
 STAFF TABLE SIZE : 4'-0" X 2'-0" X 2'-6"

NETWORK ROOM-
 NETWORK ROOM : 2 NOS.
 NETWORK ROOM SIZE: 9'-10" X 12'-1"

PROPOSED INTERIOR LAYOUT

OF STATE BANK OF INDIA'S 5TH FLOOR A & B WING, SBI GITC, CBD BELAPUR



Date: 13.03.2024

DRG NO:
AA/SBI/GITC/5FLR/02

DRAWN BY:
AKSHATA GAWADE

CHECKED BY:
RAMESH SHENOY

PRADIP SHENOY. AKSHATA SHENOY. RAMESH SHENOY.

ARCHITECTS APPROACH

20,SHREEDHAR, HANUMAN ROAD, VILE PARLE (EAST),
MUMBAI - 400 057. TELE: 022-35113986, 022-35113988.