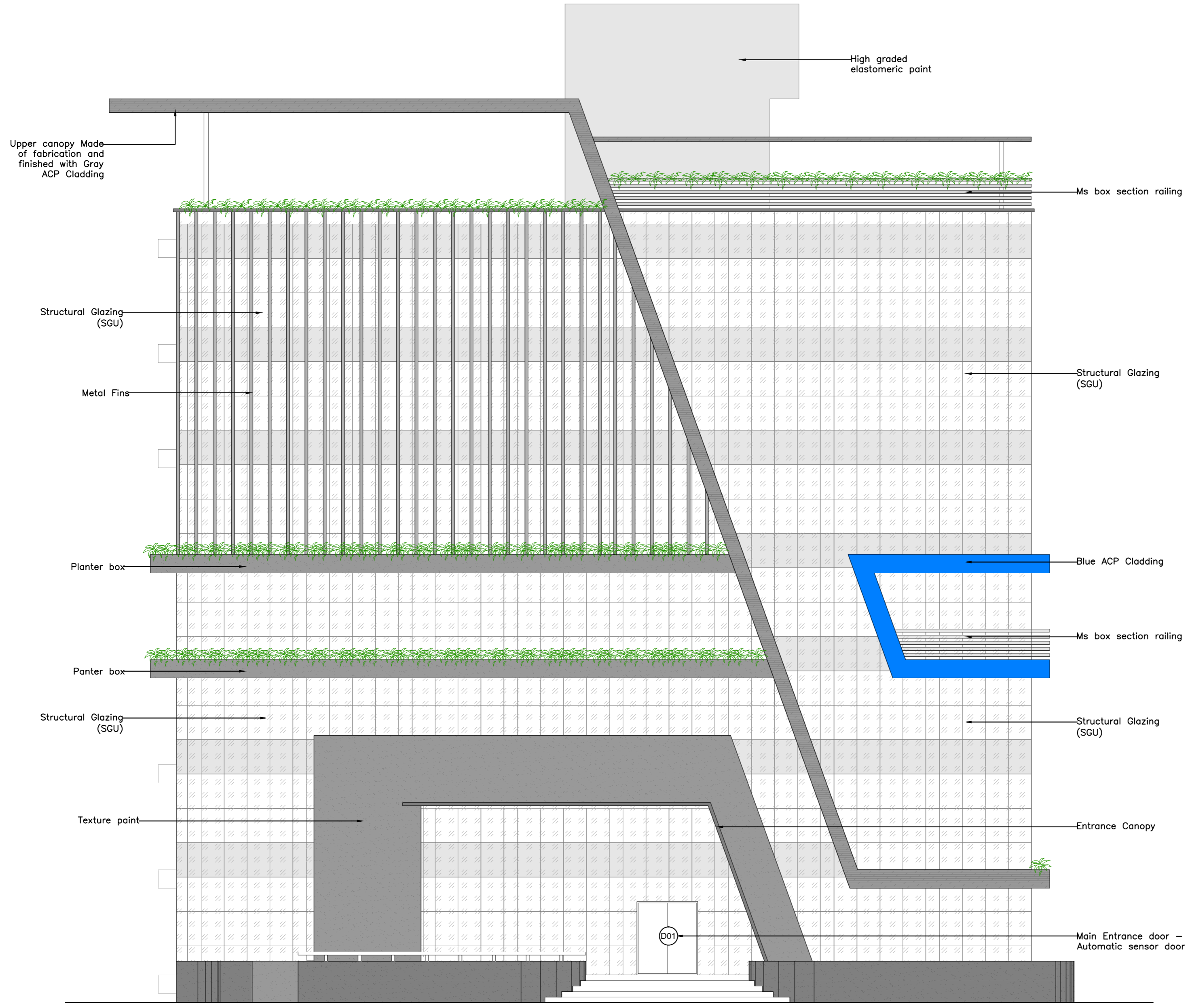


LAST SAVED BY: jengrui 10/10/24 11:53 AM  
 This drawing is property of Mamta Shah & Associates. Without our prior consent, it must be neither copied nor made available to third parties, nor must it be used by the recipient or third parties for the purpose other than for which it is meant.

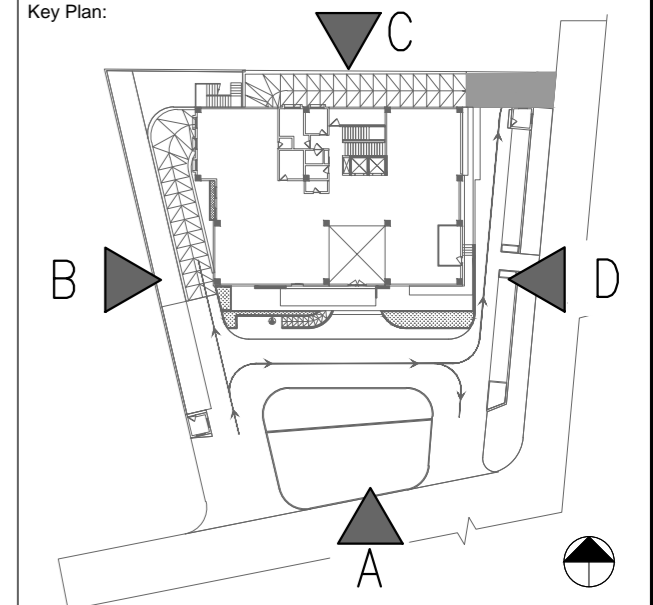


Elevation A (North Side)  
 Scale 1:100

- General Notes:
1. All dimensions on the drawings are in millimeters unless mentioned otherwise.
  2. All levels are marked from finished floor level unless mentioned otherwise.
  3. Dimensions on the drawings are not to be scaled; only stated dimensions are to be followed.

Hatch Legend	
Hatch	Item Description
	curtain / spider Glazing (DGU & SGU)
	Wall texture Paint
	Gray ACP
	Window Glass
	Blue ACP

Rev	Date	Issued	Issued to	Issued for	Author



Project: <b>SBI-VAO &amp; Other offices</b>			
Drawing: <b>Building Elevation</b>			
Sheet 01 of 04			
Drawing Code: 1740_ARC_TD_10_R1			
Print Size: A2	Scale: 1:100		
File Title: 1740_ARC_TD_10_R1			
Project Code: MSA 1740	Project Type: ARC	Location: Vadodara	
Print Date: 10-Oct-24	Drawn By: J Engineer	Checked By: J Rathwa	Approved By: M Shah
<b>MAMTA SHAH &amp; ASSOCIATES</b> Architects & Interior Designers C-12, Chanakyapuri Society, Chanakyapuri Char Rasta, New Sama Road, Baroda Ph. No. +91 265 271267 / 2710967 mamta@msain.com / www.msain.com			

Client:

**STATE BANK OF INDIA**  
 Zonal Office Baroda,  
 Paradise Complex,  
 Sayajipuri, Baroda.