

BILL OF QUANTITIES - CIVIL WORK - SBI ADMINISTRATIVE OFFICE, SHIMLA
[Second Floor and Part Ground Floor]

Second Floor						
Sr. No.	Code No.	Description of Item	Unit	Qty.	Rate	Amount
	*	PART-A - CIVIL WORK				
1		FLOORING & DADO				
1.1	NS C-1	VITRIFIED TILES IN FLOORING Providing and laying Double Charged Vitrified Tiles of size 800 x 800mm in floor with water absorption less than 0.08% and conforming to IS:15622, of approved brand & manufacturer, in all colours and shade, laid with cement based high polymer modified quick set tile adhesive (water based) conforming to IS:15477, in average 6 mm thickness, including grouting of joints. Note: 1. Above rates shall also include laying of vitrified tiles over existing mosaic tile floor after proper racking. The work / rate shall be inclusive required filling depressions in floor level, preparing of surface, dismantling of tiles, old flooring of terrazzo / conglomerate etc. if required, including disposal of malba from site to MC or contractor's own dump. The work shall be completed in all respects to the entire satisfaction of the Engineer-in-Charge / Architect. (Refer Drawing No A-02(a) for measurments.)	Sqm	445.34		
1.2	NS C-2	VITRIFIED TILES IN SKIRTING/DADO Providing and laying Double Charged Vitrified Tiles of size 800 x 800mm with water absorption less than 0.08% and conforming to IS:15622, of approved brand & manufacturer, in all colours and shade, in skirting, riser of steps, laid with cement based high polymer modified quick set tile adhesive (water based) conforming to IS: 15477, in average 6 mm thickness, including grouting of joints. Note: 1. Above rates shall also include laying of vitrified tiles over existing mosaic tile floor after proper racking. The work / rate shall be inclusive required filling depressions in floor level, preparing of surface, dismantling of tiles, old flooring of terrazzo / conglomerate etc. if required, including disposal of malba from site to MC or contractor's own dump. The work shall be completed in all respects to the entire satisfaction of the Engineer-in-Charge / Architect. (Refer Drawing No A-02(a) for measurments.)	Sqm	44.53		
1.3	NS C-3	RECTIFIED CERAMIC GLAZED FLOOR TILES Providing and laying Rectified Glazed Ceramic Floor tiles of size 300x300 mm or more (thickness to be specified by the manufacturer), of 1st quality conforming to IS : 15622, of approved make, in colours White, Ivory, Grey, Fume Red Brown, laid on 20 mm thick cement mortar 1:4 (1 Cement: 4 Coarse sand), jointing with grey cement slurry @ 3.3 kg/ sqm including grouting the joints with white cement and matching pigments etc., complete. The work shall be completed in all respects to the entire satisfaction of the Engineer-in-Charge / Architect. (Refer Drawing No A-02(a) for measurments.)	Sqm	26.72		

1.4	NS C-4	CERAMIC GLAZED WALL TILES Providing and fixing 1st quality Glazed Ceramic Wall tiles of size 300mm x 450mm conforming to IS: 15622 (thickness to be specified by the manufacturer), of approved make, in all colours, shades except burgundy, bottle green, black of any size as approved by Engineer-in-Charge, in skirting, risers of steps and dados, over 12 mm thick bed of cement mortar 1:3 (1 cement : 3 coarse sand) and jointing with grey cement slurry @ 3.3kg per sqm, including pointing in white cement mixed with pigment of matching shade complete. The work shall be completed in all respects to the entire satisfaction of the Engineer-in-Charge / Architect. (Refer Drawing No A-02(a) for measurments.)	Sqm	155.30		
1.5	NS C-5	GRANITE FLOORING, DADO and JAMBS Providing and laying Polished Lakha Red Granite stone in flooring, skirting/dado, kitchen platforms, vanity counters, window sills, facias and similar locations in required design and patterns, in linear as well as curvilinear portions of the building all complete as per the architectural drawings with 18 mm thick stone slab over 20 mm (average) thick base of cement mortar 1:4 (1 cement : 4 coarse sand) laid and jointed with cement slurry and pointing with white cement slurry admixed with pigment of matching shade including rubbing , curing moulding and polishing to edges to give high gloss finish etc. complete at all levels. The work shall be completed in all respects to the entire satisfaction of the Engineer-in-Charge / Architect. (Refer Drawing No No A-02(a) for measurments.)	Sqm	136.06		
2		PAINTING AND FINISHING				
2.1	NS C-6	Removing white or colour wash by scrapping and sand papering and preparing the surface smooth including necessary repairs to scratches etc. The work shall be completed in all respects to the entire satisfaction of the Engineer-in-charge/ Architect. (Refer drawing No. P-02(b) to P-06 for measurments.)	Sqm	54.60		
2.2	NS C-7	Providing and applying white cement based putty of average thickness 1 mm, of approved brand and manufacturer, over the plastered wall surface to prepare the surface even and smooth complete. The work shall be completed in all respects to the entire satisfaction of the Engineer-in-charge/ Architect. (Refer drawing No. P-02(b) to P-06 for measurments.)	Sqm	54.60		
2.3	NS C-8	Applying priming coats with Water thinnable cement primer for interior wall surface of approved brand and manufacture complete. The work shall be completed in all respects to the entire satisfaction of the Engineer-in-charge/ Architect. (Refer drawing No. P-02(b) to P-06 for measurments.)	Sqm	54.60		
2.4	NS C-9	Wall painting with premium plastic emulsion paint of interior grade of approved brand and manufacture, including applying additional coats wherever required to achieve even shade and colour. The work shall be completed in all respects to the entire satisfaction of the Engineer-in-charge/ Architect. (Refer drawing No. P-02(b) to P-06 for measurments.)	Sqm	54.60		

3	*	DOORS, WINDOWS and VENTILATORS				
3.1	NS C-10	DGU - UPVC GLAZED WINDOWS Providing and fixing factory made uPVC white colour casement/Top hung/casement cum fixed glazed windows comprising of uPVC multi-chambered frame of Casment 60 series , sash and mullion (where ever required) extruded profiles duly reinforced with 1.60 ± 0.2 mm thick galvanized mild steel section made from roll forming process of required length (shape & size according to uPVC profile), uPVC extruded glazing beads of appropriate dimension, EPDM gasket, stainless steel (SS 304 grade) friction hinges, zinc alloy (white powder coated) casement handles, G.I fasteners 100 x 8 mm size for fixing frame to finished wall, plastic packers, plastic caps and necessary stainless steel screws etc. Profile of frame & sash shall be mitred cut and fusion welded at all corners, mullion (if required) shall be also fusion welded including drilling of holes for fixing hardware's and drainage of water etc. After fixing frame the gap between frame and adjacent finished wall shall be filled with weather proof silicon sealant over backer rod of required size and of approved quality, all complete as per approved drawing & direction of Engineer-in-Charge.	Sqm	127.99		
		The casment system shall consist of Double glazing comprising (6mm clear toughened glass + 12mm air gap + 5mm clear toughened glass), Two(2) openable Top Hung shutters with DGU on outer side and Two(2) Openable Top Hung shutters with SS wire mesh on inner side complete in all respect as per drawing approved by Bank's Engineer/Architect. (Refer Drawing No A-02 and J-01 for measurments)				
3.2	NS C-11	SGU - UPVC GLAZED VENTILATORS Providing and fixing factory made uPVC white colour casement/casement cum fixed glazed Ventilator comprising of uPVC multi-chambered frame of Casment 60 series , sash and mullion (where ever required) extruded profiles duly reinforced with 1.60 ± 0.2 mm thick galvanized mild steel section made from roll forming process of required length (shape & size according to uPVC profile), uPVC extruded glazing beads of appropriate dimension, EPDM gasket, stainless steel (SS 304 grade) friction hinges, zinc alloy (white powder coated) casement handles, G.I fasteners 100 x 8 mm size for fixing frame to finished wall, plastic packers, plastic caps and necessary stainless steel screws etc. Profile of frame & sash shall be mitred cut and fusion welded at all corners, mullion (if required) shall be also fusion welded including drilling of holes for fixing hardware's and drainage of water etc. After fixing frame the gap between frame and adjacent finished wall shall be filled with weather proof silicon sealant over backer rod of required size and of approved quality, all complete as per approved drawing & direction of Engineer-in-Charge. The fixed glazing system shall consist of Single glazing comprising 5mm frosted toughened glass complete in all respect as per drawing approved by Bank's Engineer/Architect. (Refer Drawing No A-02 and J-01 for measurments.)	Sqm	1.49		
3.3	N.S C-12	ROOM DOORS WITH FRAMES Providing and Fixing Room Doors including 4" x 2" Wooden frames and 6" x 1.5" Wooden Top and Side rails and 8" x 1.5" Wooden Bottom rail of shutter with 8mm thick Clear toughened glass fixed with wooden beading including premium quality hardware and fittings. All exposed wood shall be PU Polished after proper surface prepration as per manufacturer's specifications and to the entire satisfaction of Engineer-in-charge / Architect. (Refer drawing No. J-01.)	Sqm	32.92		

3.4	N.S C-13	TOILET DOOR WITH FRAME: Providing and Fixing Toilet Doors including 4" x 2.5" Wooden frames and 35mm thick flush shutters laminated on Both sides with 1.00mm decorative laminate in approved shades including premium quality hardware and fittings. All exposed wood shall be PU Polished after proper surface preparation as per manufacturer's specifications and to the entire satisfaction of Engineer-in-charge / Architect. (Refer drawing No. J-01.)	Sqm	8.71		
4	N.S C-15	TOILET CUBICLE: Providing & fixing Fresh Color Restroom Cubicles Systems Thickness of Compact Laminate : 12 mm, Color of HPL Boards: Dual Colour, Size of Cubicle : 1000mm (W) & 1550mm, (D) X 2003mm (H), Door Size : 1750mm (H) x 610mm (W), Overall Height Of Cubicle : 2003mm, (Including bottom Gap of 150mm), Accessories: Standard Aluminium, Stainless Steel - 304 Grade accessories) a) Aluminium "U" Channel, b) Aluminium "F" channel, c) Aluminium Door Stopper Channel, d) Aluminium Top Rail, e) SS Coat Hook, f) SS Privacy Thumb turn c/w Occupancy Indicator, g) SS Door Knob, h) SS Hinges with Cover, i) SS Adjustable Foot 316 Grade j) Rubber Door Stopper Lining, k) S.S.Screws 304 G & P.V.C Wall Plugs complete in all respects to the entire satisfaction of Engineer-in-charge / Architect. (Refer drawing No. A-02 and TC-01.)	Each	2.00		
5	NS C-16	Demolishing brick work manually/ by mechanical means including disposal of rubbish to authorised dumping ground or upto an unobjectionable location. The dismantled rubbish/material shall be collected at the same height on appropriate platforms to avoid dust clouds into the neighbourhood and open atmosphere by sprinkling water etc. The work shall be completed in all respects to the entire satisfaction of the Engineer-in-Charge / Architect. (Refer Drawing No A-02(a) for measurements.)	Cum	20.83		
6	NS C-17	Half brick masonry with common burnt clay F.P.S. (non modular) bricks of class designation 7.5 in superstructure above plinth level up to floor V level. Cement mortar 1:4 (1 cement :4 coarse sand). The work shall be completed in all respects to the entire satisfaction of the Engineer-in-Charge / Architect. (Refer Drawing No A-02(a) for measurements.)	Sqm	81.24		
7	NS C-18	Brick work with common burnt clay F.P.S. (non modular) bricks of class designation 7.5 in superstructure above plinth level in all shapes and sizes in Cement mortar 1:6 (1 cement : 6 coarse sand). The work shall be completed in all respects to the entire satisfaction of the Engineer-in-Charge / Architect. (Refer Drawing No A-02(a) for measurements.)	Cum	3.43		
8	NS C-19	12 mm cement plaster of mix 1:6 (1 cement: 6 coarse sand). The work shall be completed in all respects to the entire satisfaction of the Engineer-in-Charge / Architect. (Refer Drawing No A-02(a) for measurements.)	Sqm	69.81		

9	NS C-20	15 mm cement plaster on rough side of single or half brick wall of mix 1:6 (1 cement: 6 coarse sand). The work shall be completed in all respects to the entire satisfaction of the Engineer-in-Charge / Architect. (Refer Drawing No A-02(a) for measurments.)	Sqm	69.81		
				TOTAL - (A)		
	*	PART- B - PUBLIC HEALTH WORK				
10	N.S PH-1	WATER CLOSET Providing and fixing in position European Type Rimless Wall Hung WC Bowl (CNS-WHT-963UFSM) of Jaquar or equivalent make of Size:375x510x355 mm,with UF soft close slim seat cover, Hinges, Fixing Accessories and Accessories set,complete in all respects to the entire satisfaction of the Engineer-in-charge/ Architect. (Refer Drawing No A-02.)	Each	5.00		

11	N.S PH-2	CONCEALED CISTERN Providing and fixing in position single piece slim Concealed Cistern (JCS-WHT-2400P) of Jaquar or equivalent make with installation kit and P-type drain pipe connection set for Wall Hung WC with Flush Control Plate (JCP-CHR-102415) of Jaquar or equivalent make complete in all respects to the entire satisfaction of the Engineer-in-charge/ Architect. (Refer Drawing No A-02.)	Each	5.00		
12	N.S PH-3	S.S HEALTH FAUCETS Providing and fixing in position CP Health faucet with 1 meter PVC tube (ALE-547) of Jaquar or equivalent make including all fixtures, complete in all respects to the entire satisfaction of the Engineer-in-charge/ Architect. (Refer Drawing No A-02.)	Each	5.00		
13	N.S PH-4	JET CONCEALED STOP COCKS Providing & fixing Exposed Part Kit of Concealed Stop Cock & Flush Cock (FLR-5083NK) of Jaquar or equivalent make with Fitting Sleeve, Operating Lever & Adjustable Wall Flange with Seal and Regular Body of Concealed Stop Cock (ALD-083) of Jaquar or equivalent make Suitable for 15 mm Pipe Line with Protection Cap (without Exposed Parts) including all fixing accessories complete in all respects to the entire satisfaction of the Engineer-in-charge/ Architect. (Refer Drawing No A-02.)	Each	5.00		
14	N.S PH-5	TOILET ROLL HOLDERS Providing & fixing Toilet Roll Holder (ACN-1153S) of Jaquar or equivalent make with stainless steel flap including all fixing accessories complete in all respects to the entire satisfaction of the Engineer-in-charge/ Architect. (Refer Drawing No A-02.)	Each	5.00		
15	N.S PH-6	URINALS Providing & fixing Urinal (URS-WHT-13255) of Jaquar or equivalent make Size:480x300x740mm including all fixing accessories with waste coupling (ALD-705L130) complete in all respects to the entire satisfaction of the Engineer-in-charge/ Architect. (Refer Drawing No A-02.)	Each	3.00		
16	N.S PH-7	URINAL SENSORS Providing & fixing Urinal Sensor(SNR-51097) of Jaquar or equivalent make Flushing Valve for Urinal with Complete Kit (Battery Operated) (Suitable For Urinal URS-WHT-13255) including all fixing accessories complete in all respects to the entire satisfaction of the Engineer-in-charge/ Architect. (Refer Drawing No A-02.)	Each	3.00		
17	N.S PH-8	WASH BASIN: Providing & fixing Oval shape Table Top Counter Wash Basin (CNS-WHT-705) of Jaquar or equivalent make with Size: 500 x 380 x 120 mm including all fixing accessories with waste coupling (ALD-705L130) complete in all respects to the entire satisfaction of the Engineer-in-charge/ Architect. (Refer Drawing No A-02.)	Each	8.00		
18	N.S PH-9	SENSOR PILLAR TAP: Providing & fixing Sensor Faucet (SNR -51021A) of Jaquar or equivalent make for Wash Basin with 175mm Extension Body (Battery Operated) including all fixing accessories complete in all respects to the entire satisfaction of the Engineer-in-charge/ Architect. (Refer Drawing No A-02.)	Each	1.00		

19	N.S PH-10	PRESSMATIC PILLAR TAPS Providing & fixing Pressmatic Type Pillar Cock Auto Closing System with 65 mm extension body (PRS-031L65) including all fixing accessories complete in all respects of (JAQUAR or similar model of Equivalent make such as Hindware/Parryware etc.) (Refer Drawing No A-02.)	Each	7.00		
20	N.S PH-11	SOAP DISPENSERS Providing & fixing Soap Dispenser with Glass Bottle (ACN-1135N) of Jaquar or equivalent make including all fixing accessories complete in all respects to the entire satisfaction of the Engineer-in-charge/ Architect. (Refer Drawing No A-02.)	Each	8.00		
21	N.S PH-12	TOWEL RAILS Providing and fixing in position Towel Ring Square with Round Flange (ACN - 1121N) of Jaquar or equivalent make of Jaquar fixed with rawl plugs embedded In walls with C.P. brass screws, complete in all respects including cutting and making good the walls etc. single towel rail 600 mm. long. (Refer Drawing No A-02.)	Each	8.00		
22	N.S PH-13	ANGLE COCKS Providing & fixing 15mm nominal dia Angular Stop Cock with wall Flange (FLR-5053N) of Jaquar or equivalent make including all fixing accessories complete in all respects to the entire satisfaction of the Engineer-in-charge/ Architect. (Refer Drawing No A-02.)	Each	13.00		
23	N.S PH-14	LOOKING MIRRORS Providing and fixing 600x450 mm beveled edge mirror of superior glass complete with 6 mm thick hard board ground fixed to wooden cleats with C.P. brass screws and washers complete. (Refer Drawing No A-02.)	Each	8.00		
24	N.S PH-15	FLOOR TRAPS Providing & Fixing UPVC Floor Traps with 90mm dia outlet . I.S.I. marked of the self cleaning design including cement concrete 1:2:4 under and around the floor trap where required upto floor level complete in all respects including cutting and making good the walls and floors, etc. minimum depth of water should be 50 mm with a minimum seal of 50 mm. complete in all respects to the entire satisfaction of the Engineer-in-charge/ Architect. (Refer Drawing No A-02.)	Each	16.00		
25	N.S PH-16	S.S GRATINGS Providing & Fixing Stainless steel Jali With frame (100 mm dia) 304 G for Floor trap including cutting and making good the walls and floors complete in all respects to the entire satisfaction of the Engineer-in-charge/ Architect. (Refer Drawing No A-02.)	Each	16.00		
26	N.S PH-17	Providing and fixing UPVC SWR Ring fit Pipes/Fittings including jointing with 'O'seal ring , single socket waste drainage pipe lines Type-B having 6 Kgf/cm2 conforming to including all required UPVC SWR Fittings for UPVC pipes, Type-B having 6 Kgf/cm2 conforming to IS:14735-99 for UPVC inside/outside the building , including jointing with seal ring, cutting, fixing the pipe complete in all respect to the entire satisfaction of Engineer-in-Charge. (Refer Drawing No A-02.)				
	(i)	90mm Outer dia	Rmt	43.89		
	(ii)	110mm Outer dia	Rmt	20.12		

27	N.S PH-18	Providing and fixing Chlorinated Polyvinyl Chloride (CPVC) pipes , having thermal stability for hot & cold water supply, including all CPVC plain & brass threaded fittings, i/c fixing the pipe with clamps at 1.00 m spacing. This includes jointing of pipes & fittings with one step CPVC solvent cement and the cost of cutting chases and making good the same including testing of joints complete as per direction of Engineer in Charge. (Refer Drawing No A-02.)				
	(i)	20 mm nominal outer dia Pipes	Rmt	18.29		
	(ii)	25 mm nominal outer dia Pipes	Rmt	33.53		
	(iii)	32 mm nominal outer dia Pipes	Rmt	21.95		
				TOTAL - (B)		
		PART - C - CREDIT FOR SALVAGEABLE MATERIAL				
28		Credit for Dismantled material (to be dismantled by the agency)				
i		Sanitary / water supply fixtures	lot	1		
ii		Steel glazed windows (Approximate Weigh of Window is 53 kg. salvage value @ Rs. 30 per Kg is Rs.1590. Deduct Cost of Dismantling @ 425 Per Window. Net Salvage Value = 1590-425 = Rs 1165 per window)	Each	37		
				TOTAL - (C)		
		TOTAL OF SECOND FLOOR (A + B) - C				
Part Ground Floor						
Sr. No.	Code No.	Description of Item	Unit	Qty.	Rate	Amount
	*	PART-A - CIVIL WORK				
1		FLOORING & DADO				
1.1	NS C-1	VITRIFIED TILES IN FLOORING Providing and laying Double Charged Vitrified Tiles of size 800 x 800mm in floor with water absorption less than 0.08% and conforming to IS:15622, of approved brand & manufacturer, in all colours and shade, laid with cement based high polymer modified quick set tile adhesive (water based) conforming to IS:15477, in average 6 mm thickness, including grouting of joints. Note: 1. Above rates shall also include laying of vitrified tiles over existing mosaic tile floor after proper racking. The work / rate shall be inclusive required filling depressions in floor level, preparing of surface, dismantling of tiles, old flooring of terrazzo / conglomerate etc. if required, including disposal of malba from site to MC or contractor's own dump. The work shall be completed in all respects to the entire satisfaction of the Engineer-in-Charge / Architect. (Refer Drawing No A-04(a) for measurments.)	Sqm	89.18		

1.2	NS C-2	VITRIFIED TILES IN SKIRTING/DADO Providing and laying Double Charged Vitrified Tiles of size 800 x 800mm with water absorption less than 0.08% and conforming to IS:15622, of approved brand & manufacturer, in all colours and shade, in skirting, riser of steps, laid with cement based high polymer modified quick set tile adhesive (water based) conforming to IS: 15477, in average 6 mm thickness, including grouting of joints. Note: 1. Above rates shall also include laying of vitrified tiles over existing mosaic tile floor after proper racking. The work / rate shall be inclusive required filling depressions in floor level, preparing of surface, dismantling of tiles, old flooring of terrazzo / conglomerate etc. if required, including disposal of malba from site to MC or contractor's own dump. The work shall be completed in all respects to the entire satisfaction of the Engineer-in-Charge / Architect. (Refer Drawing No A-04(a) for measurements.)	Sqm	8.92		
1.3	NS C-3	RECTIFIED CERAMIC GLAZED FLOOR TILES Providing and laying Rectified Glazed Ceramic Floor tiles of size 300x300 mm or more (thickness to be specified by the manufacturer), of 1st quality conforming to IS : 15622, of approved make, in colours White, Ivory, Grey, Fume Red Brown, laid on 20 mm thick cement mortar 1:4 (1 Cement: 4 Coarse sand), jointing with grey cement slurry @ 3.3 kg/ sqm including grouting the joints with white cement and matching pigments etc., complete. The work shall be completed in all respects to the entire satisfaction of the Engineer-in-Charge / Architect. (Refer Drawing No A-04(a) for measurements.)	Sqm	4.13		
1.4	NS C-4	CERAMIC GLAZED WALL TILES Providing and fixing 1st quality Glazed Ceramic Wall tiles of size 300mm x 450mm conforming to IS: 15622 (thickness to be specified by the manufacturer), of approved make, in all colours, shades except burgundy, bottle green, black of any size as approved by Engineer-in-Charge, in skirting, risers of steps and dados, over 12 mm thick bed of cement mortar 1:3 (1 cement : 3 coarse sand) and jointing with grey cement slurry @ 3.3kg per sqm, including pointing in white cement mixed with pigment of matching shade complete. The work shall be completed in all respects to the entire satisfaction of the Engineer-in-Charge / Architect. (Refer Drawing No A-04(a) for measurements.)	Sqm	21.38		
1.5	NS C-5	GRANITE FLOORING, DADO and JAMBS Providing and laying Polished Lakha Red Granite stone in flooring, skirting/dado, kitchen platforms, vanity counters, window sills, facias and similar locations in required design and patterns, in linear as well as curvilinear portions of the building all complete as per the architectural drawings with 18 mm thick stone slab over 20 mm (average) thick base of cement mortar 1:4 (1 cement : 4 coarse sand) laid and jointed with cement slurry and pointing with white cement slurry admixed with pigment of matching shade including rubbing , curing moulding and polishing to edges to give high gloss finish etc. complete at all levels. The work shall be completed in all respects to the entire satisfaction of the Engineer-in-Charge / Architect. (Refer Drawing No No A-04(a) for measurements.)	Sqm	98.60		
2		PAINTING AND FINISHING				

2.1	NS C-6	Removing white or colour wash by scrapping and sand papering and preparing the surface smooth including necessary repairs to scratches etc.The work shall be completed in all respects to the entire satisfaction of the Engineer-in-charge/ Architect. (Refer drawing No. P-04(b) & P-06 for measurments.)	Sqm	63.71		
2.2	NS C-7	Providing and applying white cement based putty of average thickness 1 mm, of approved brand and manufacturer, over the plastered wall surface to prepare the surface even and smooth complete.The work shall be completed in all respects to the entire satisfaction of the Engineer-in-charge/ Architect. (Refer drawing No. P-04(b) & P-06 for measurments.)	Sqm	63.71		
2.3	NS C-8	Applying priming coats with Water thinnable cement primer for interior wall surface of approved brand and manufacture complete.The work shall be completed in all respects to the entire satisfaction of the Engineer-in-charge/ Architect. (Refer drawing No. P-04(b) & P-06 for measurments.)	Sqm	63.71		
2.4	NS C-9	Wall painting with premium plastic emulsion paint of interior grade of approved brand and manufacture, including applying additional coats wherever required to achieve even shade and colour.The work shall be completed in all respects to the entire satisfaction of the Engineer-in-charge/ Architect. (Refer drawing No. P-04(b) & P-06 for measurments.)	Sqm	63.71		
3		DOORS, WINDOWS and VENTILATORS				
3.1	N.S C-10	DGU - UPVC GLAZED WINDOWS Providing and fixing factory made uPVC white colour casement/Top hung/casement cum fixed glazed windows comprising of uPVC multi-chambered frame of Casment 60 series , sash and mullion (where ever required) extruded profiles duly reinforced with 1.60 ± 0.2 mm thick galvanized mild steel section made from roll forming process of required length (shape & size according to uPVC profile), uPVC extruded glazing beads of appropriate dimension, EPDM gasket, stainless steel (SS 304 grade) friction hinges, zinc alloy (white powder coated) casement handles, G.I fasteners 100 x 8 mm size for fixing frame to finished wall, plastic packers, plastic caps and necessary stainless steel screws etc. Profile of frame & sash shall be mitred cut and fusion welded at all corners, mullion (if required) shall be also fusion welded including drilling of holes for fixing hardware's and drainage of water etc. After fixing frame the gap between frame and adjacent finished wall shall be filled with weather proof silicon sealant over backer rod of required size and of approved quality, all complete as per approved drawing & direction of Engineer-in-Charge.	Sqm	29.89		
		The casment system shall consist of Double glazing comprising (6mm clear toughened glass + 12mm air gap + 5mm clear toughened glass), Two(2) openable Top Hung shutters with DGU on outer side and Two(2) Openable Top Hung shutters with SS wire mesh on inner side complete in all respect as per drawing approved by Bank's Engineer/Architect. (Refer Drawing No A-05 and J-01 for measurments)				

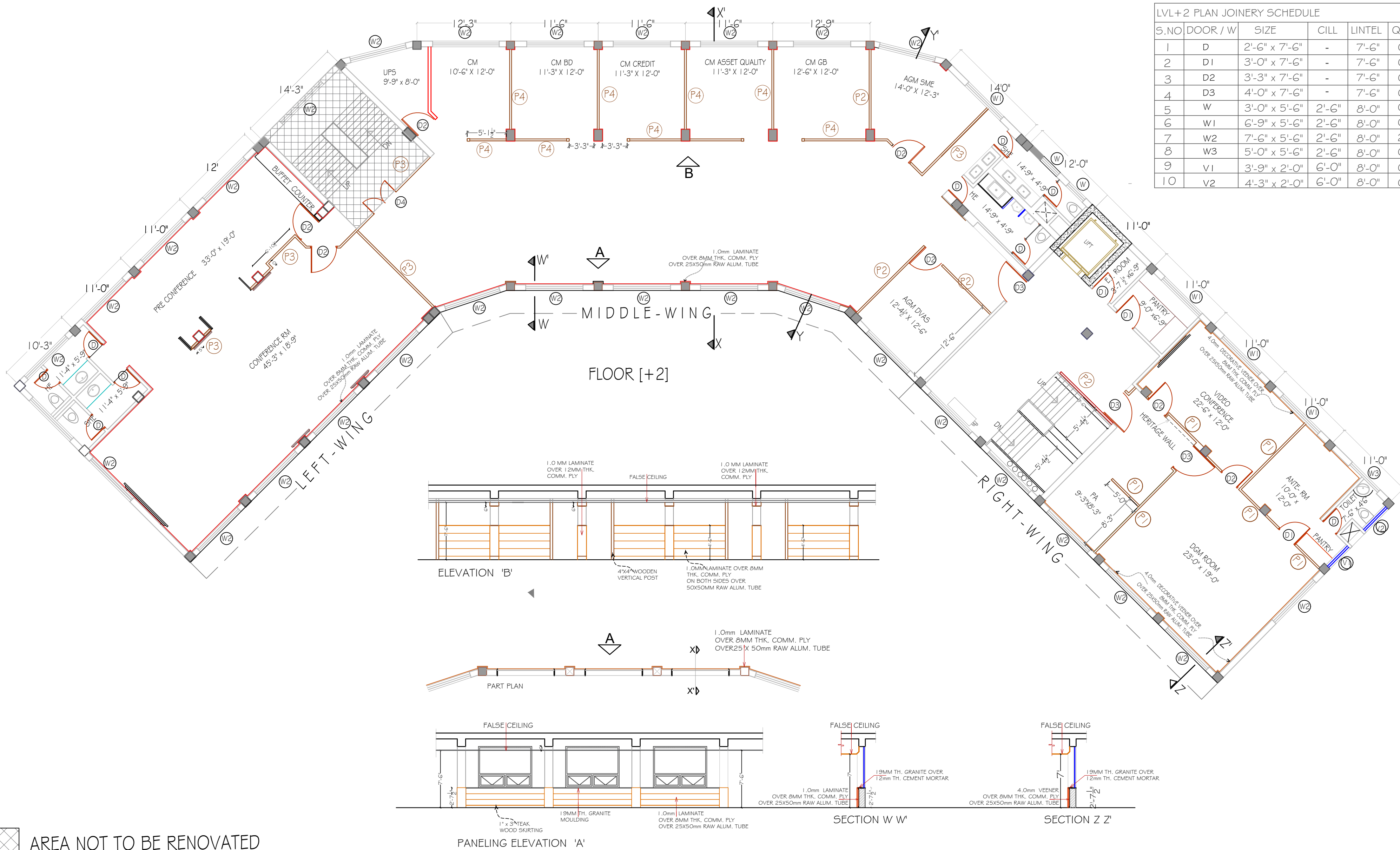
3.2	N.S C-11	SGU - UPVC GLAZED VENTILATORS Providing and fixing factory made uPVC white colour casement/casement cum fixed glazed Ventilator comprising of uPVC multi-chambered frame of Casment 60 series , sash and mullion (where ever required) extruded profiles duly reinforced with 1.60 ± 0.2 mm thick galvanized mild steel section made from roll forming process of required length (shape & size according to uPVC profile), uPVC extruded glazing beads of appropriate dimension, EPDM gasket, stainless steel (SS 304 grade) friction hinges, zinc alloy (white powder coated) casement handles, G.I fasteners 100 x 8 mm size for fixing frame to finished wall, plastic packers, plastic caps and necessary stainless steel screws etc. Profile of frame & sash shall be mitred cut and fusion welded at all corners, mullion (if required) shall be also fusion welded including drilling of holes for fixing hardware's and drainage of water etc. After fixing frame the gap between frame and adjacent finished wall shall be filled with weather proof silicon sealant over backer rod of required size and of approved quality, all complete as per approved drawing & direction of Engineer-in-Charge. The fixed glazing system shall consist of Single glazing comprising 5mm frosted toughened glass complete in all respect as per drawing approved by Bank's Engineer/Architect. (Refer Drawing No A-05 and J-01 for measurments.)	Sqm	1.49		
3.3	N.S C-12	ROOM DOOR WITH FRAME: Providing and Fixing Room Doors including 4" x 2" Wooden frames and 6" x 1.5" Wooden Top and Side rails and 8" x 1.5" Wooden Bottom rail of shutter with 8mm thick Clear toughened glass fixed with wooden beading including premium quality hardware and fittings. All exposed wood shall be PU Polished after proper surface preparation as per manufacturer's specifications and to the entire satisfaction of Engineer-in-charge / Architect. (Refer drawing No. J-01.)	Sqm	8.71		
3.4	NS C-13	TOILET DOOR WITH FRAME: Providing and Fixing Toilet Doors including 4" x 2.5" Wooden frames and 35mm thick flush shutters laminated on Both sides with 1.00mm Plastic laminate in approved shades including premium quality hardware and fittings. All exposed wood shall be PU Polished after proper surface preparation as per manufacturer's specifications and to the entire satisfaction of Engineer-in-charge / Architect. (Refer drawing No. J-01.)	Sqm	3.48		
4	NS C-14	AUTOMATIC SLIDING DOOR SYSTEM: Providing & Fixing of Automatic Sliding Door with 12mm toughened Glass , Automatic Bi-Parting Sliding Door Operator, Modular Design including internal cover with operator dimensions 100mm W x 130mm H x 4.2 Mtr L for max. opening size of 2.0Mtr Wide & Weight capacity for Double Leaf Door is 2*120 Kg. Microprocessor Controller unit will be self learning with adjustable parameters for opening & closing speed, hold open time, reversing when obstacles are encountered. Operator will have 24V, 55W Brushless DC Motor, INDIAN Make Timing Belt. Operator can be integrated with Microwave Sensor/Presence Detector Sensor/Foot Switch Sensor/Handwave sensor, Safety Beam (Light Barrier), Programmable Remote Control to Set different modes & Automatic Locking Mechanism, RFID/Biometric/Fingerprint/Access Card Control System & Push Button. The work shall be completed in all respects to the entire satisfaction of the Engineer-in-charge/ Architect. (Refer Drawing No A-02, D-02 for measurments.)	Each	1.00		

13	N.S PH-4	JET CONCEALED STOP COCK: Providing & fixing Exposed Part Kit of Concealed Stop Cock & Flush Cock (FLR-5083NK) of Jaquar or equivalent make with Fitting Sleeve, Operating Lever & Adjustable Wall Flange with Seal and Regular Body of Concealed Stop Cock (ALD-083) of Jaquar or equivalent make Suitable for 15 mm Pipe Line with Protection Cap (without Exposed Parts) including all fixing accessories complete in all respects to the entire satisfaction of the Engineer-in-charge/ Architect. (Refer Drawing No A-05.)	Each	1.00		
14	N.S PH-5	TOILET ROLL HOLDER: Providing & fixing Toilet Roll Holder (ACN-1153S) of Jaquar or equivalent make with stainless steel flap including all fixing accessories complete in all respects to the entire satisfaction of the Engineer-in-charge/ Architect. (Refer Drawing No A-05.)	Each	1.00		
15	N.S PH-6	URINAL: Providing & fixing Urinal (URS-WHT-13255) of Jaquar or equivalent make Size:480x300x740mm including all fixing accessories with waste coupling (ALD-705L130) complete in all respects to the entire satisfaction of the Engineer-in-charge/ Architect. (Refer Drawing No A-05.)	Each	1.00		
16	N.S PH-7	URINAL SENSOR: Providing & fixing Urinal Sensor(SNR-51097) of Jaquar or equivalent make Flushing Valve for Urinal with Complete Kit (Battery Operated) (Suitable For Urinal URS-WHT-13255) including all fixing accessories complete in all respects to the entire satisfaction of the Engineer-in-charge/ Architect. (Refer Drawing No A-05.)	Each	1.00		
17	N.S PH-8	WASH BASIN: Providing & fixing Oval shape Table Top Counter Wash Basin (CNS-WHT-705) of Jaquar or equivalent make with Size: 500 x 380 x 120 mm including all fixing accessories with waste coupling (ALD-705L130) complete in all respects to the entire satisfaction of the Engineer-in-charge/ Architect. (Refer Drawing No A-05.)	Each	1.00		
18	N.S PH-10	PRESSMATIC PILLAR TAP: Providing & fixing Pressmatic Type Pillar Cock Auto Closing System with 65 mm extension body (PRS-031L65) including all fixing accessories complete in all respects of (JAQUAR or similar model of Equivalent make such as Hindware/Parryware etc.) (Refer Drawing No A-02.)	Each	1.00		
19	N.S PH-11	SOAP DISPENSER: Providing & fixing Soap Dispenser with Glass Bottle (ACN-1135N) of Jaquar or equivalent make including all fixing accessories complete in all respects to the entire satisfaction of the Engineer-in-charge/ Architect. (Refer Drawing No A-05.)	Each	1.00		
20	N.S PH-12	TOWEL RAIL: Providing and fixing in position Towel Ring Square with Round Flange (ACN - 1121N) of Jaquar or equivalent make of Jaquar fixed with rawl plugs embedded In walls with C.P. brass screws, complete in all respects including cutting and making good the walls etc. single towel rail 600 mm. long. (Refer Drawing No A-05.)	Each	1.00		

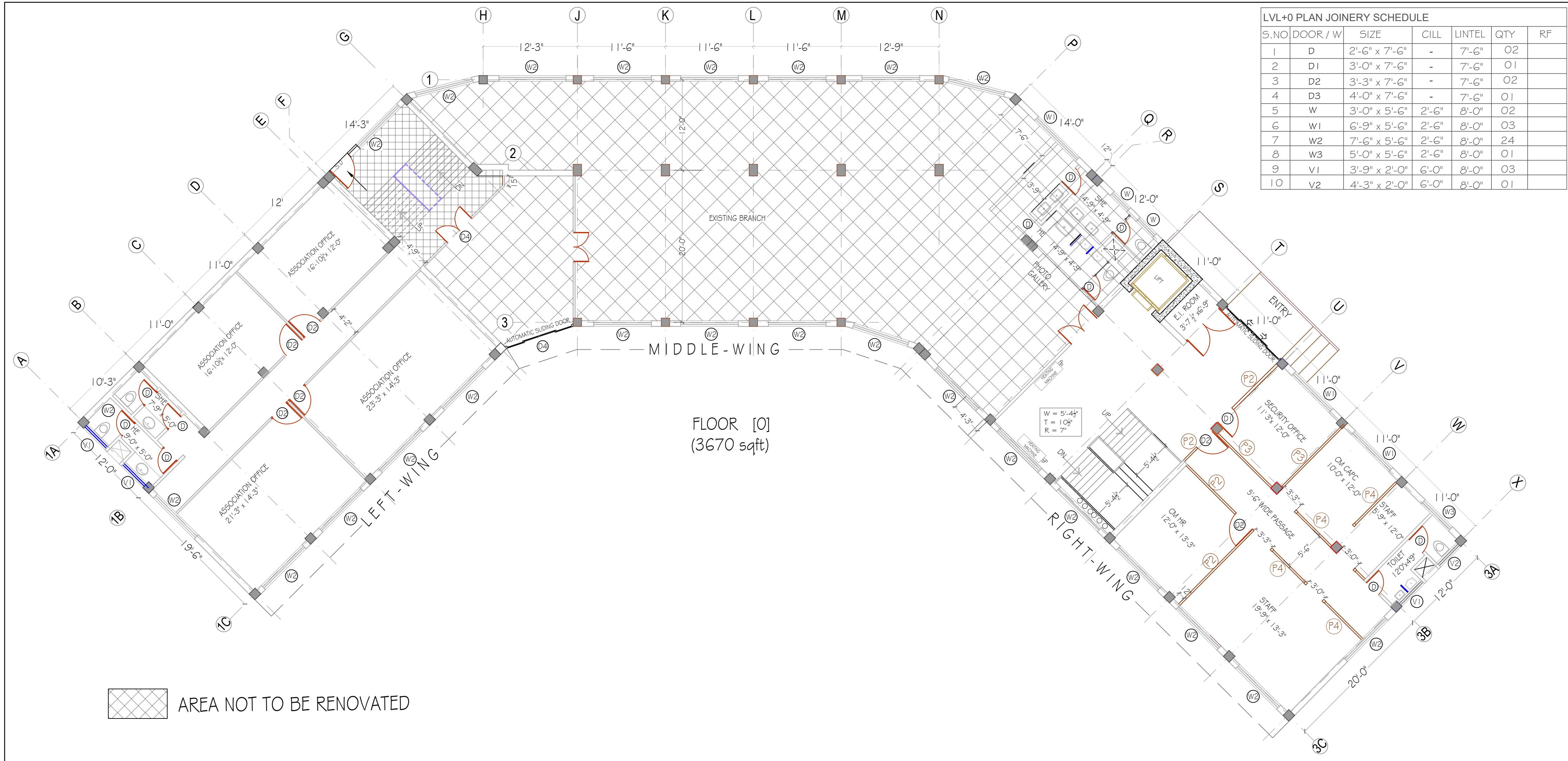
		PART - C - CREDIT FOR SALVAGEABLE MATERIAL				
27		Credit for Dismantled material (to be dismantled by the agency)				
i		Sanitary / water supply fixtures	lot	1		
ii		Steel glazed windows (Approximate Weigh of Window is 53 kg. salvage value @ Rs. 30 per Kg is Rs.1590. Deduct Cost of Dismantling @ 425 Per Window. Net Salvage Value = 1590-425 = Rs 1165 per window)	Each	10		
				TOTAL - (C)		
		TOTAL OF PART GROUND FLOOR (A + B) - C				
		TOTAL OF SECOND FLOOR AND PART GROUND FLOOR				

LIST OF DRAWINGS



1. P-02_(FLOOR+2) _PARTITION and PANELLING
2. P-04_(FLOOR-0) _PARTITION and PANELLING
3. J-01_FLOOR (0 & +2) _JOINERY DETAIL
4. TC-01_FLOOR (0 & +2) _TOILET CUBICALS

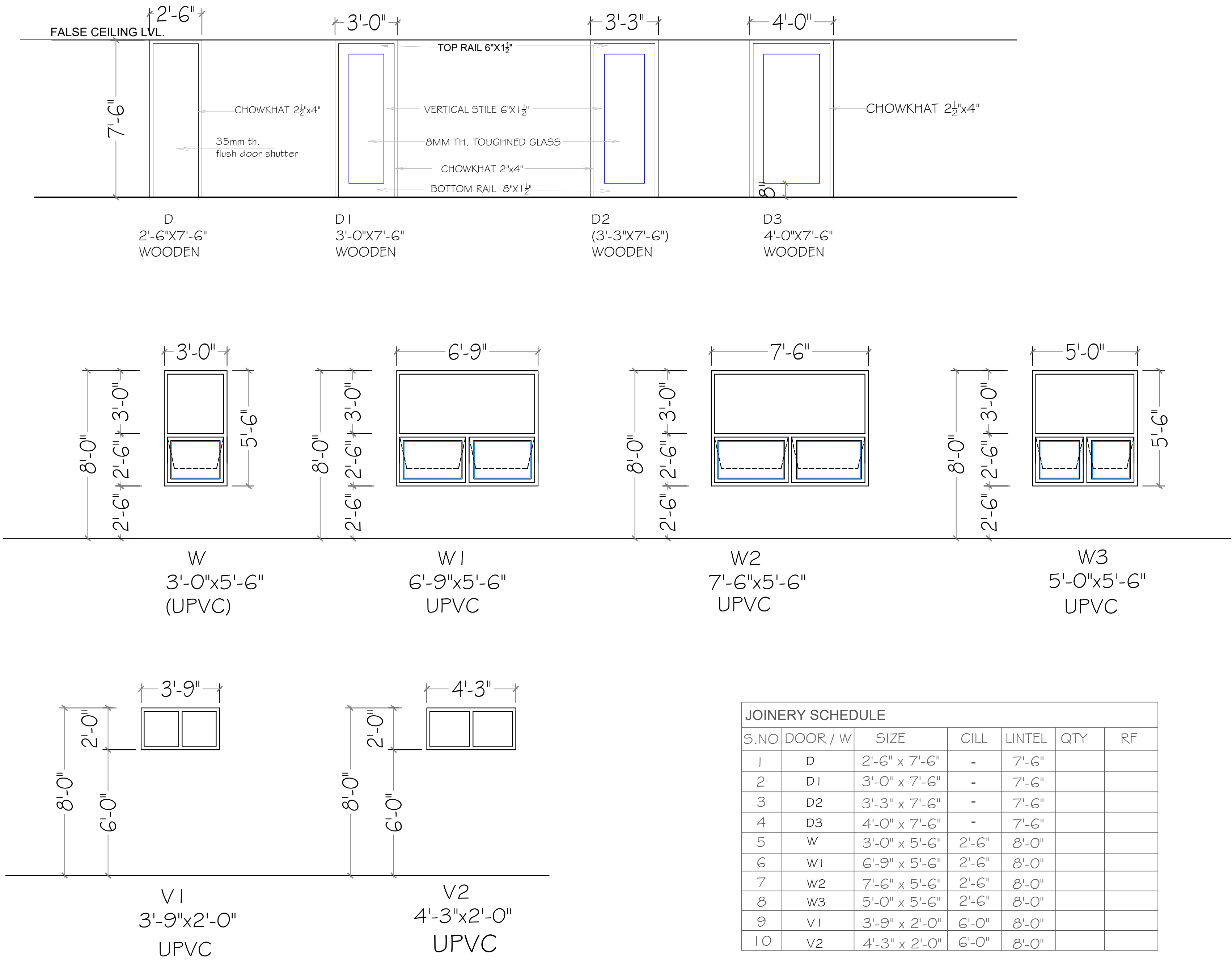


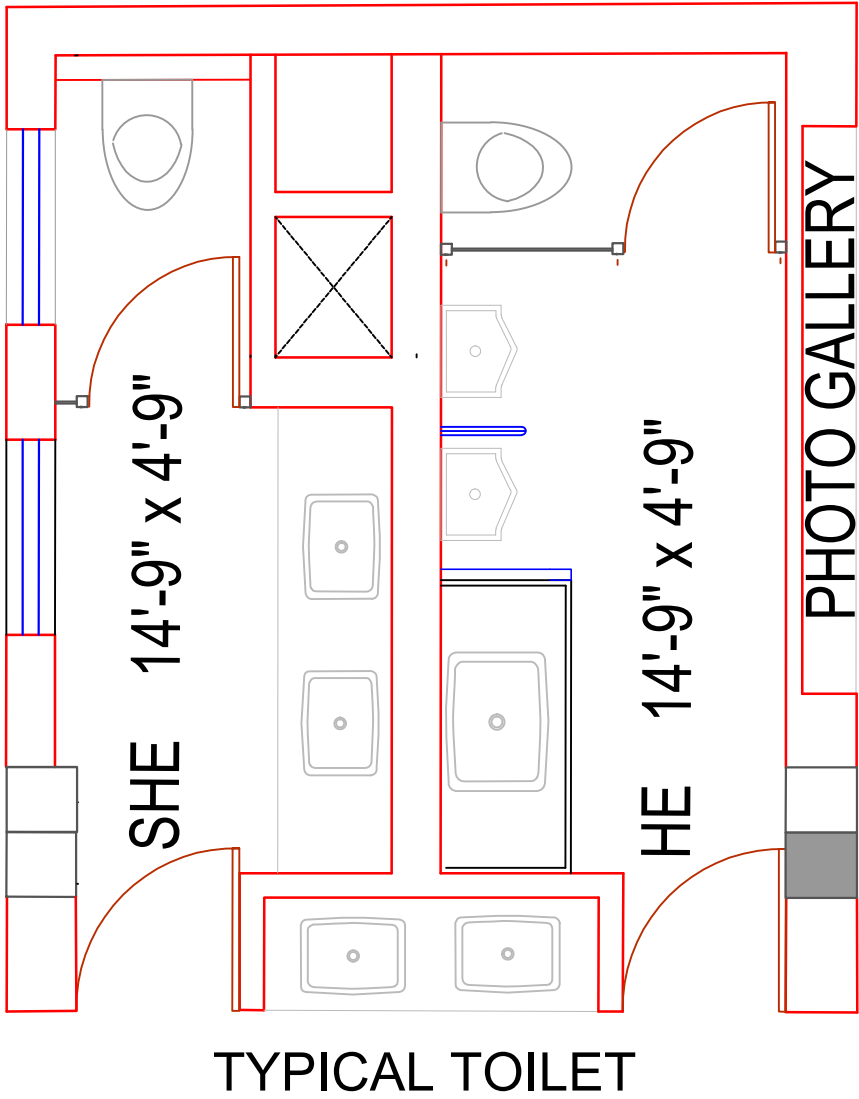
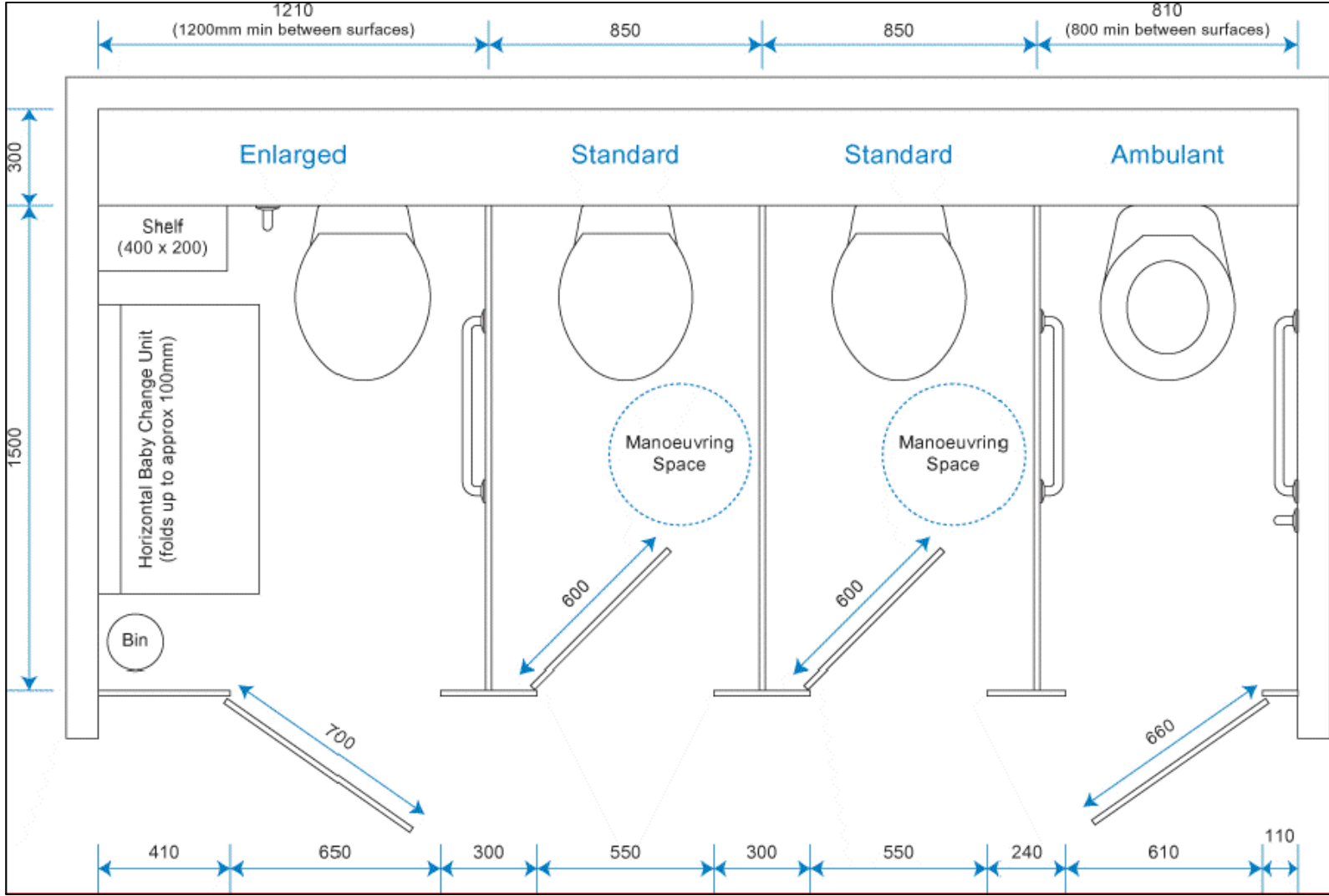
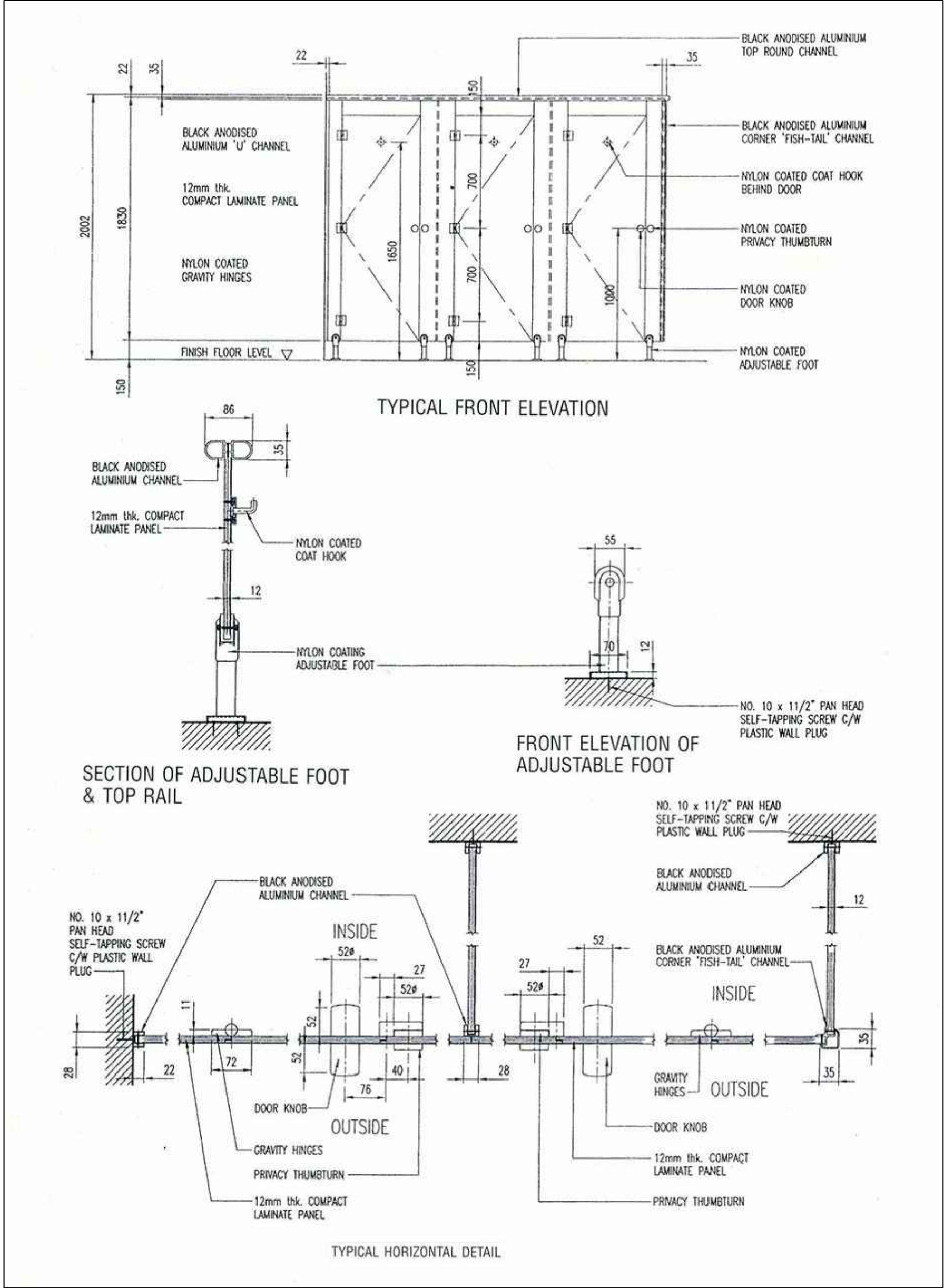
LVL+2 PLAN JOINERY SCHEDULE					
S.NO	DOOR / W	SIZE	CILL	LINTEL	QTY
1	D	2'-6" x 7'-6"	-	7'-6"	09
2	D1	3'-0" x 7'-6"	-	7'-6"	03
3	D2	3'-3" x 7'-6"	-	7'-6"	07
4	D3	4'-0" x 7'-6"	-	7'-6"	03
5	W	3'-0" x 5'-6"	2'-6"	8'-0"	02
6	W1	6'-9" x 5'-6"	2'-6"	8'-0"	04
7	W2	7'-6" x 5'-6"	2'-6"	8'-0"	29
8	W3	5'-0" x 5'-6"	2'-6"	8'-0"	01
9	V1	3'-9" x 2'-0"	6'-0"	8'-0"	01
10	V2	4'-3" x 2'-0"	6'-0"	8'-0"	01




LVL+0 PLAN JOINERY SCHEDULE						
S.NO	DOOR / W	SIZE	CILL	LINTEL	QTY	RF
1	D	2'-6" x 7'-6"	-	7'-6"	02	
2	D1	3'-0" x 7'-6"	-	7'-6"	01	
3	D2	3'-3" x 7'-6"	-	7'-6"	02	
4	D3	4'-0" x 7'-6"	-	7'-6"	01	
5	W	3'-0" x 5'-6"	2'-6"	8'-0"	02	
6	W1	6'-9" x 5'-6"	2'-6"	8'-0"	03	
7	W2	7'-6" x 5'-6"	2'-6"	8'-0"	24	
8	W3	5'-0" x 5'-6"	2'-6"	8'-0"	01	
9	V1	3'-9" x 2'-0"	6'-0"	8'-0"	03	
10	V2	4'-3" x 2'-0"	6'-0"	8'-0"	01	

<div></div> <div>BACHITTER SINGH ASSOCIATES ARCHITECTS,INT.DESIGNERS,ENGINEERS, S.C.O.20,SECTOR 7-C, CHANDIGARH.</div>	PROJECT		JOB NO	SCALE	TYPE OF PARTITION		B S A				5	REVISED as per OBSERVATIONS DURING MEETING ON 20.03.2025	20.03.25					
	RENOVATION OF SBI ADMINISTRATIVE OFFICE, SHIMLA	FLOOR [0] PARTITION & PANELING LAYOUT PLAN	901	FIT TO SCALE			P2	PARTITION - P2- 74MM THK. 7'-6" HIGH (OPAQUE UPTO 4'-6" HEIGHT)	DRAWN BY:						NAME	SIGN		
			DRG. NO.	DATE													P3	PARTITION - P3 -74MM THK. 7'-6" HIGH (FULL HEIGHT OPAQUE)
			P-04	NOV,2024			P4	PARTITION - P4 -74MM THK. 4'-6" HIGH (OPAQUE)	PR ARCHITECT						B.S.			
															REV	DESCRIPTION	DATE	





REFERENCE IMAGE

<div></div> <div>BACHITTER SINGH ASSOCIATES</div> <div>ARCHITECTS, INT. DESIGNERS, ENGINEERS, S.C.O. 20, SECTOR 7-C, CHANDIGARH.</div>	PROJECT	SHEET TITLE	JOB NO.	SCALE		B S A				3	REVISED as per OBSERVATIONS DURING VISIT ON 26.11.2024 TO AO	27.11.24		
	RENOVATION OF SBI ADMINISTRATIVE OFFICE, SHIMLA	TOILET CUBICLE	901	FIT TO SCALE				NAME		SIGN	2	REVISED as per OBSERVATIONS OF CORPORATE OFFICE		20.02.22
			DRG. NO.	DATE							1	REVISED- LHO OBSERVATIONS		25.09.21
			TC-01 [06+2]	NOV, 2024							REV	DESCRIPTION		DATE